

+++ NEOMETRIX



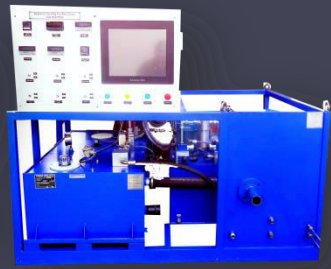
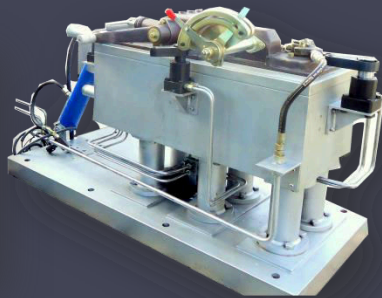
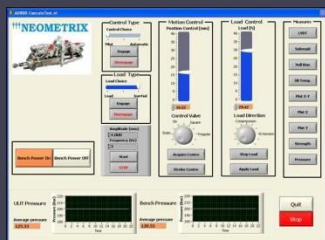
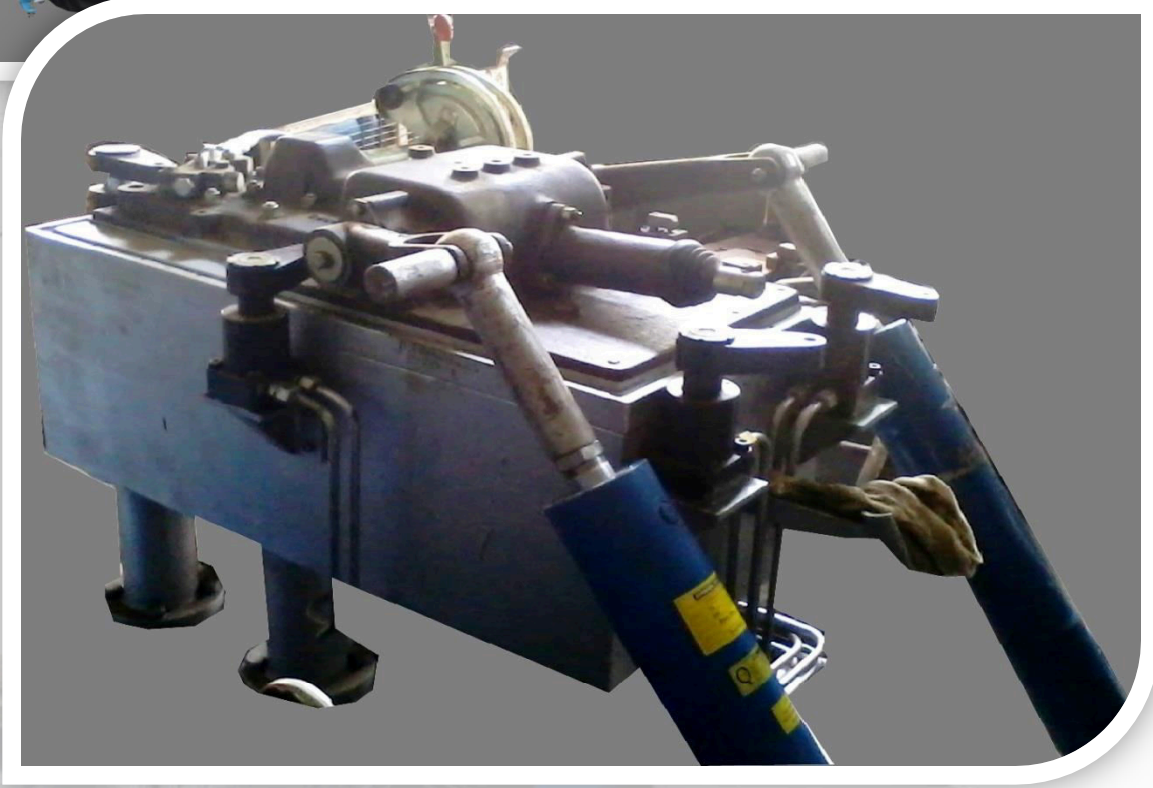
TRACTOR REAR COVER ASSEMBLY TEST RIG



TRACTOR CONTROL VALVE TEST RIG

††† NEOMETRIX

TEST BENCHES FOR TRACTORS



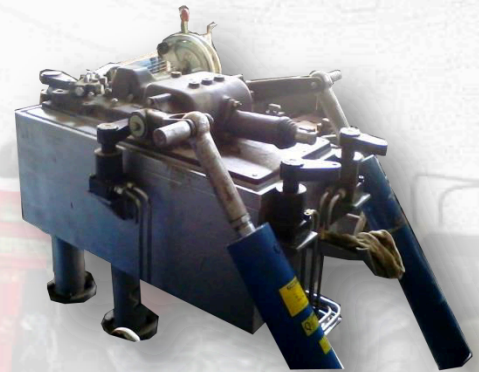
REAR COVER ASSEMBLY / CONTROL VALVE TEST RIGS

PRODUCT CODE – (NXA 1329)

+++ NEOMETRIX

TEST PARAMETERS

TEST PARAMETERS	DESCRIPTION
LOAD	800KG, 1200KG,1500KG
PRESSURE SETTING	THREE SETTINGS
TEST UNIT PARAMETERS	FLOW : 5 – 46LPM PRESSURE : 0 - 250BAR
TEST DURATION	3 MIN. PER UNIT.



CONTROL PARAMETERS

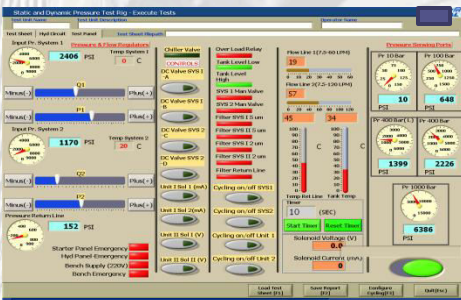
CONTROL PARAMETERS	DESCRIPTION
LOAD	BY CONTROLLING PRESSURE IN LOADING ACTUATOR.
FLOW FOR TEST UNIT	USING AC DRIVE TO CONTROL PUMP RPM HENCE CONTROL FLOW
TEMPERATURE OF HYDRAULIC OIL	BY USING HEATER & AIR CONTROL WITH INDEPENDENT CLOSE LOOP COOLING CIRCUIT.

VARIOUS CONTROL VALVES ON LIFT HOUSING (REAR COVER) ARE CHECKED.

AND THE FOLLOWING PARAMETERS HAVE BEEN CHECKED ON THESE CONTROL VALVES.

- **DEAD BAND – 0.3 TO 0.5mm**
- **LIFT – DRIFTING CHECK BY LVDT- .01 mm**
- **LEAKAGE**
- **LIFT TIME**
- **PROPORTIONALITY IN FLOW**
- **NEUTRAL POSITION CHECK**

***PARAMETERS CAN BE CUSTOMIZED AS PER REQUIREMENT.**



MAJOR SUB-SYSTEMS

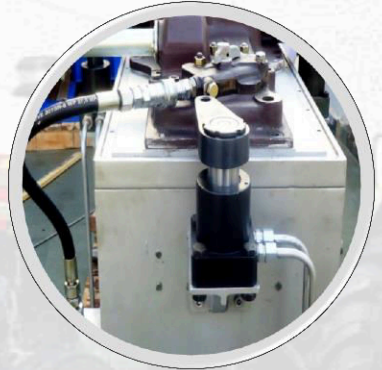
- **PROFILE OF SS MATCHING THE REAR COVER RESTS.**
 - **TANK OF SS BELOW THE PROFILE WHICH ACTS AS DRAIN.**
 - **HYDRAULIC CLAMPS TO AUTOMATICALLY TIGHTEN THE ASSEMBLY WHILE TESTING.**
-
- **VARIABLE FLOW : 0-46lpm**
 - **FLOW MEASUREMENT : 50lpm**
 - **INTERNAL GEAR PUMP : 50bar, 46bar**
-
- **DC VALVES FOR SWITCHING OF LOADING/UNLOADING/DIFFERENT LOAD SETTING.**
 - **PRESSURE CONTROL WITH UNLOADING FACILITY.**
 - **AIR COOLING IS PROVIDED IN THE TANK.**
-
- **TWO DIFFERENT SYSTEMS PROVIDED, ONE FOR GRIPPING THE REAR COVER AND OTHER FOR LOADING.**
 - **PRESSURE CONTROL WITH UNLOADING FACILITY IS PROVIDED.**
 - **FLOW DIVISION IS USED TO FEED ACTUATORS.**
-
- **NI LAB VIEW IS USED.**
 - **NI DAQ MAX IS USED.**
 - **USER FRIENDLY INTERFACE IS PROVIDED.**

**MONITORING & RECORDING
DATA RECORDING IN COMPUTER.
DATA STORAGE & DISPLAY.
DATA ANALYSIS, REPORT GENERATION.**

+++ NEOMETRIX

KEY FEATURES

HYDRAULIC CLAMP TIGHTEN THE REAR COVER AUTOMATICALLY.



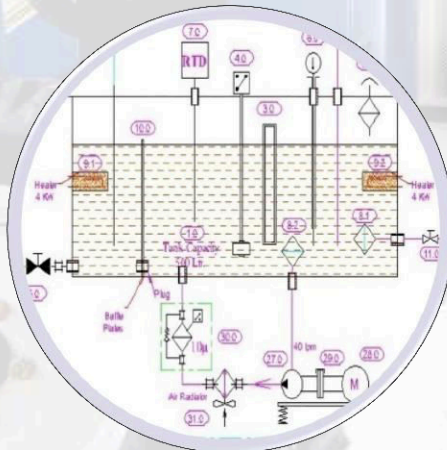
TOUCH PANEL SCREEN FOR EASE OF INDICATION & CONTROLLING.



AIR COOLING AND OIL HEATING IS USED FOR TEMPERATURE CONTROL.

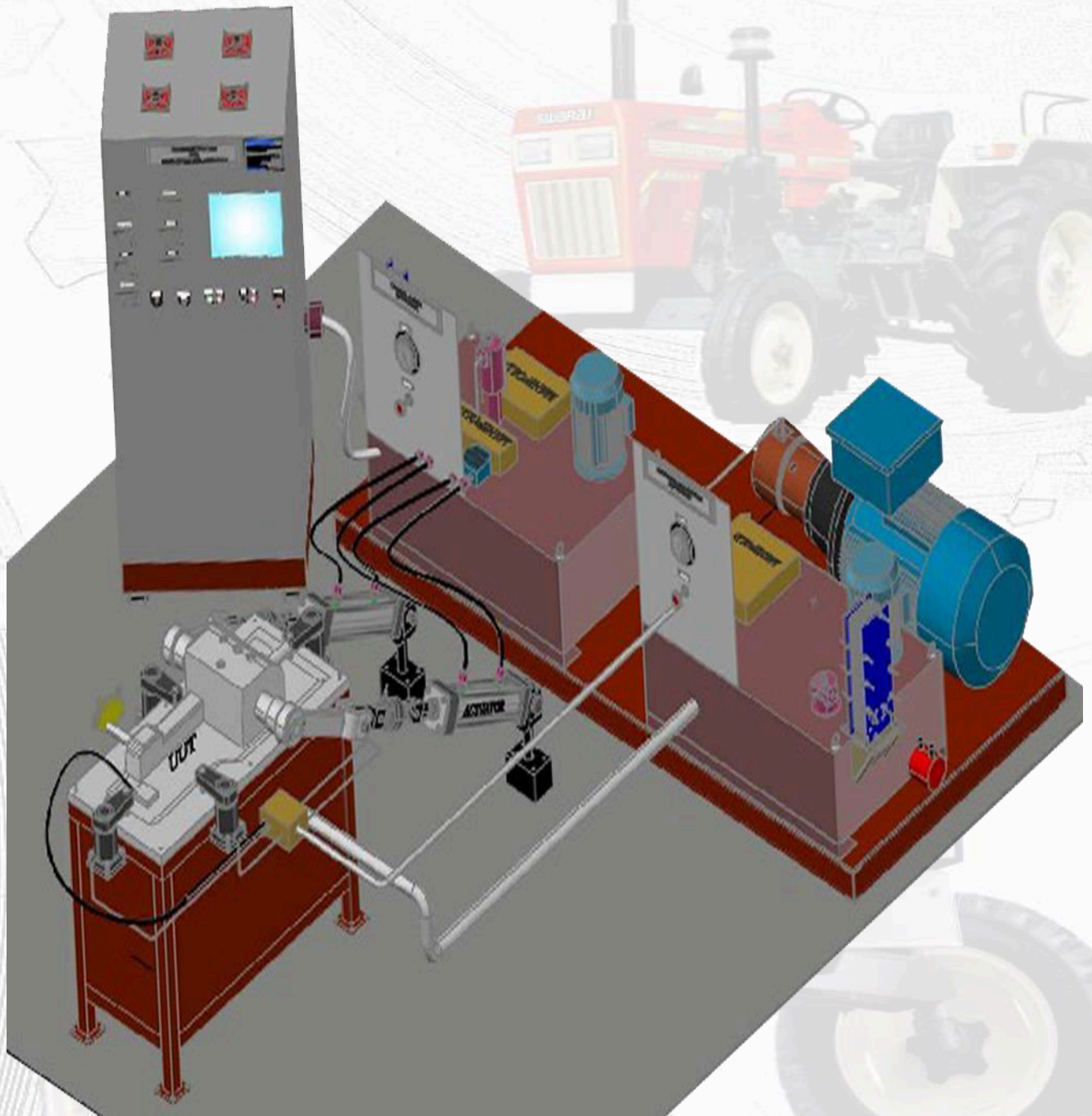


DUPLEX FILTRATION IS USED FOR BETTER OIL FILTRATION AND EASE OF OPERATION.



CLOSE LOOP COOLING & FILTRATION PROVIDED.

††† NEOMETRIX

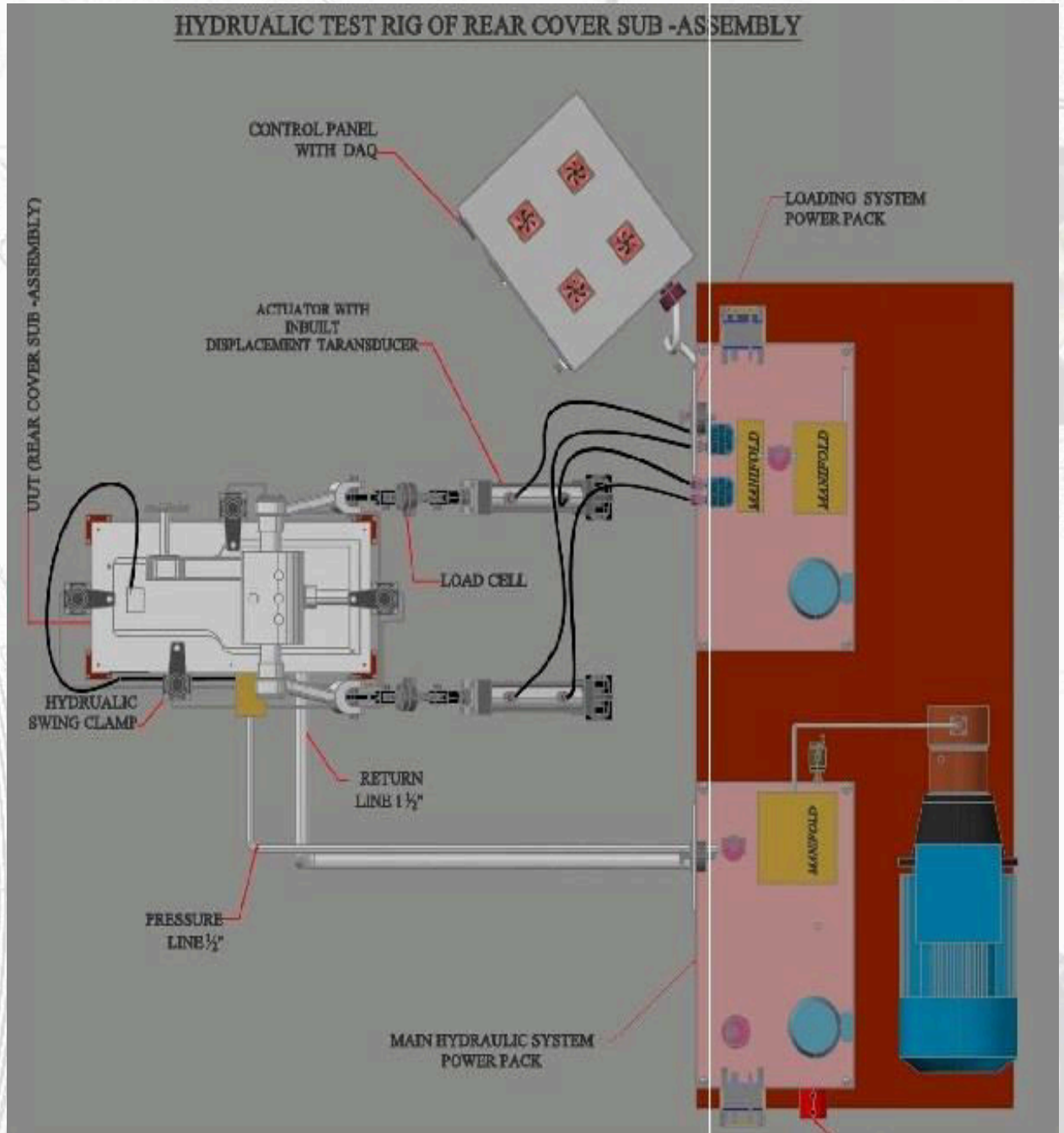


3D VIEW OF TEST RIG

Ph. No. +91-120-4500800

www.neometrix.in

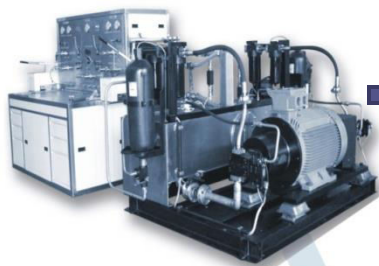
sales@neometrix.in



TOP VIEW OF TEST RIG

OTHER PRODUCTS FROM NEOMETRIX

+++ NEOMETRIX



→ **HYDRAULIC COMPONENT TEST SYSTEMS**

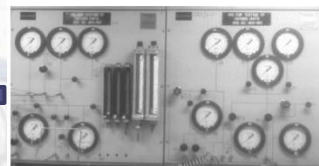
FUEL COMPONENT TEST SYSTEMS ←



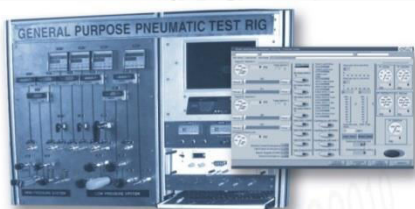
→ **ELECTRICAL COMPONENT TEST SYSTEMS**



← **OXYGEN COMPONENT TEST SYSTEM**



→ **PNEUMATIC COMPONENT TEST SYSTEMS**



AVIATION : GROUND SUPPORT EQUIPMENT (GSE)

UNIVERSAL GAS BOOSTER STATION: UGSS-O₂



HYDRAULIC SERVICING TROLLEY: HST



Neometrix Engineering Pvt. Ltd.

E-148, Sector-63 Noida-201301, India

Tel: +91-120-4500800, Fax: +91-120-4500800

Email: contact@neometrix.in, website: www.neometrix.in

Ph. No. +91-120-4500800

www.neometrix.in

sales@neometrix.in